



VICINITY MAP

I-49 N SERVICE ROAD WATERLINE EXTENTION
CITY OF OPELOUSAS
ST. LANDRY PARISH, LOUISIANA

SCALE: 1" = 1,000'

DATE: 09-24-2025

DESIGNED BY: KB, III

CHECKED BY: KB, III

DRAWN BY: SBM

NO.	DATE	REVISION DESCRIPTION	BY

STATE OF LOUISIANA
Kenneth Boagni, III
REG. No. 31312
PROFESSIONAL ENGINEER
IN
CIVIL ENGINEERING
09/24/2025

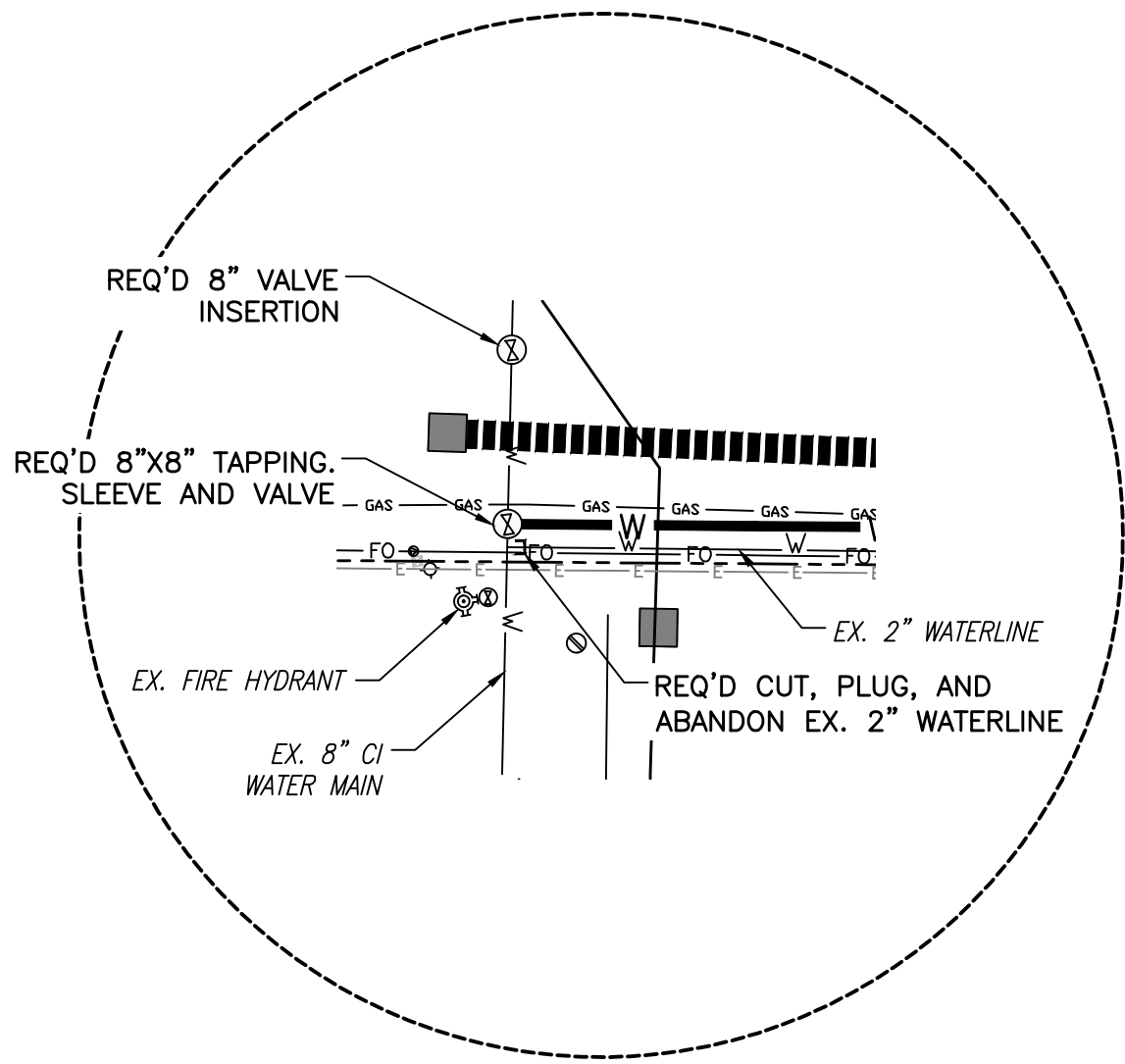
Morgan Goudreau & Associates

CIVIL ENGINEERS • LAND SURVEYORS

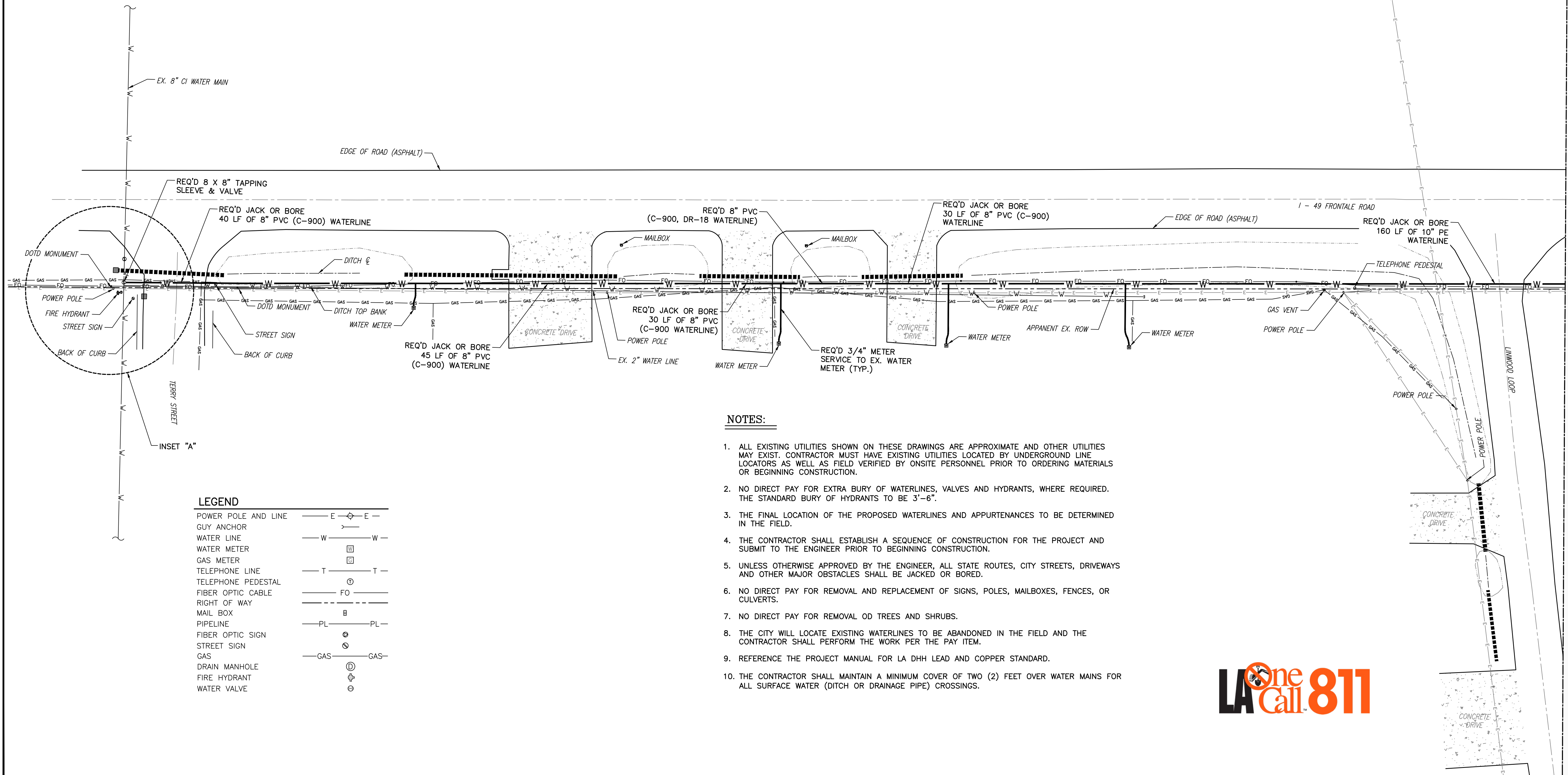
1703 West Landry Street, Opelousas, LA 70570
Phone: 337-948-4222 www.morgangoudreau.com

MGA

PROJECT NO.
W#321



INSET "A"
N.T.S.



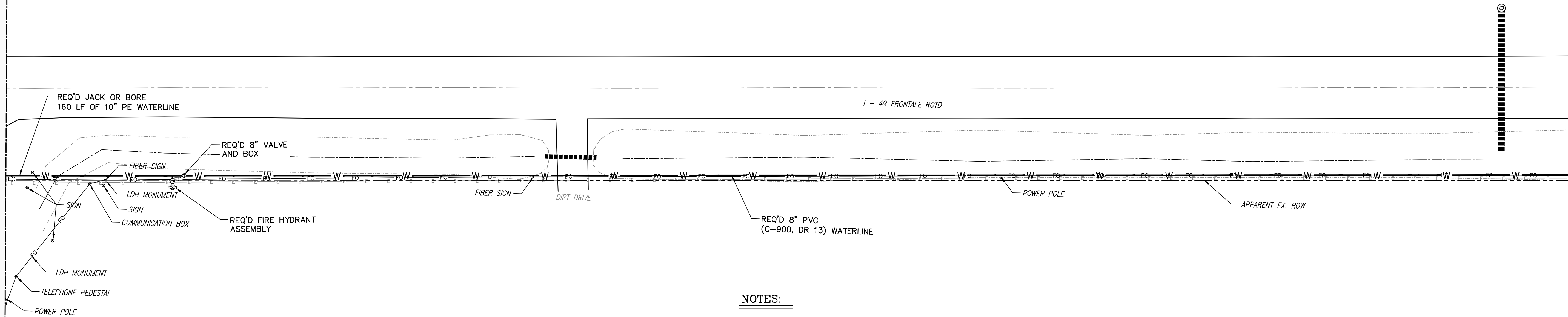
NOTES:

- ALL EXISTING UTILITIES SHOWN ON THESE DRAWINGS ARE APPROXIMATE AND OTHER UTILITIES MAY EXIST. CONTRACTOR MUST HAVE EXISTING UTILITIES LOCATED BY UNDERGROUND LINE LOCATORS AS WELL AS FIELD VERIFIED BY ONSITE PERSONNEL PRIOR TO ORDERING MATERIALS OR BEGINNING CONSTRUCTION.
- NO DIRECT PAY FOR EXTRA BURY OF WATERLINES, VALVES AND HYDRANTS, WHERE REQUIRED. THE STANDARD BURY OF HYDRANTS TO BE 3'-6".
- THE FINAL LOCATION OF THE PROPOSED WATERLINES AND APPURTENANCES TO BE DETERMINED IN THE FIELD.
- THE CONTRACTOR SHALL ESTABLISH A SEQUENCE OF CONSTRUCTION FOR THE PROJECT AND SUBMIT TO THE ENGINEER PRIOR TO BEGINNING CONSTRUCTION.
- UNLESS OTHERWISE APPROVED BY THE ENGINEER, ALL STATE ROUTES, CITY STREETS, DRIVEWAYS AND OTHER MAJOR OBSTACLES SHALL BE JACKED OR BORED.
- NO DIRECT PAY FOR REMOVAL AND REPLACEMENT OF SIGNS, POLES, MAILBOXES, FENCES, OR CULVERTS.
- NO DIRECT PAY FOR REMOVAL OF TREES AND SHRUBS.
- THE CITY WILL LOCATE EXISTING WATERLINES TO BE ABANDONED IN THE FIELD AND THE CONTRACTOR SHALL PERFORM THE WORK PER THE PAY ITEM.
- REFERENCE THE PROJECT MANUAL FOR LA DHH LEAD AND COPPER STANDARD.
- THE CONTRACTOR SHALL MAINTAIN A MINIMUM COVER OF TWO (2) FEET OVER WATER MAINS FOR ALL SURFACE WATER (DITCH OR DRAINAGE PIPE) CROSSINGS.



MATCHLINE SHEET 5

SHEET NUMBER		4	
WATERLINE PLAN			
I-49 N SERVICE ROAD WATERLINE EXTENTION CITY OF OPELOUSAS ST. LANDRY PARISH, LOUISIANA			
SCALE: 1" = 20'	DATE: 09-24-2025	DESIGNED BY: KB, III	CHECKED BY: KB, III
		DRAWN BY: SBM	
		BY	
		REVISION DESCRIPTION	
		DATE	
		NO.	
Morgan Goudreau & Associates			
CIVIL ENGINEERS		LAND SURVEYORS	
1703 West Landry Street, Opelousas, LA 70570 Phone: 337-948-4222 www.morgangoudreau.com			
MGA			
PROJECT NO. W#321			

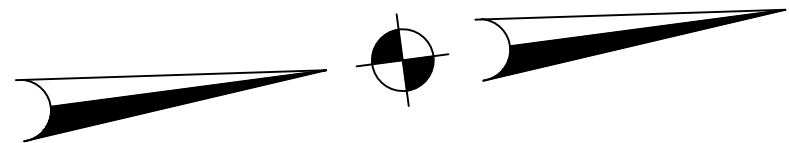


LEGEND

POWER POLE AND LINE	— E —
GUY ANCHOR	— > —
WATER LINE	— W —
WATER METER	— [M] —
GAS METER	— [G] —
TELEPHONE LINE	— T —
TELEPHONE PEDESTAL	— (P) —
FIBER OPTIC CABLE	— FO —
RIGHT OF WAY	— [] —
MAIL BOX	— [B] —
PIPELINE	— PL —
FIBER OPTIC SIGN	— (S) —
STREET SIGN	— (S) —
GAS	— GAS —
DRAIN MANHOLE	— (D) —
FIRE HYDRANT	— (H) —
WATER VALVE	— (V) —

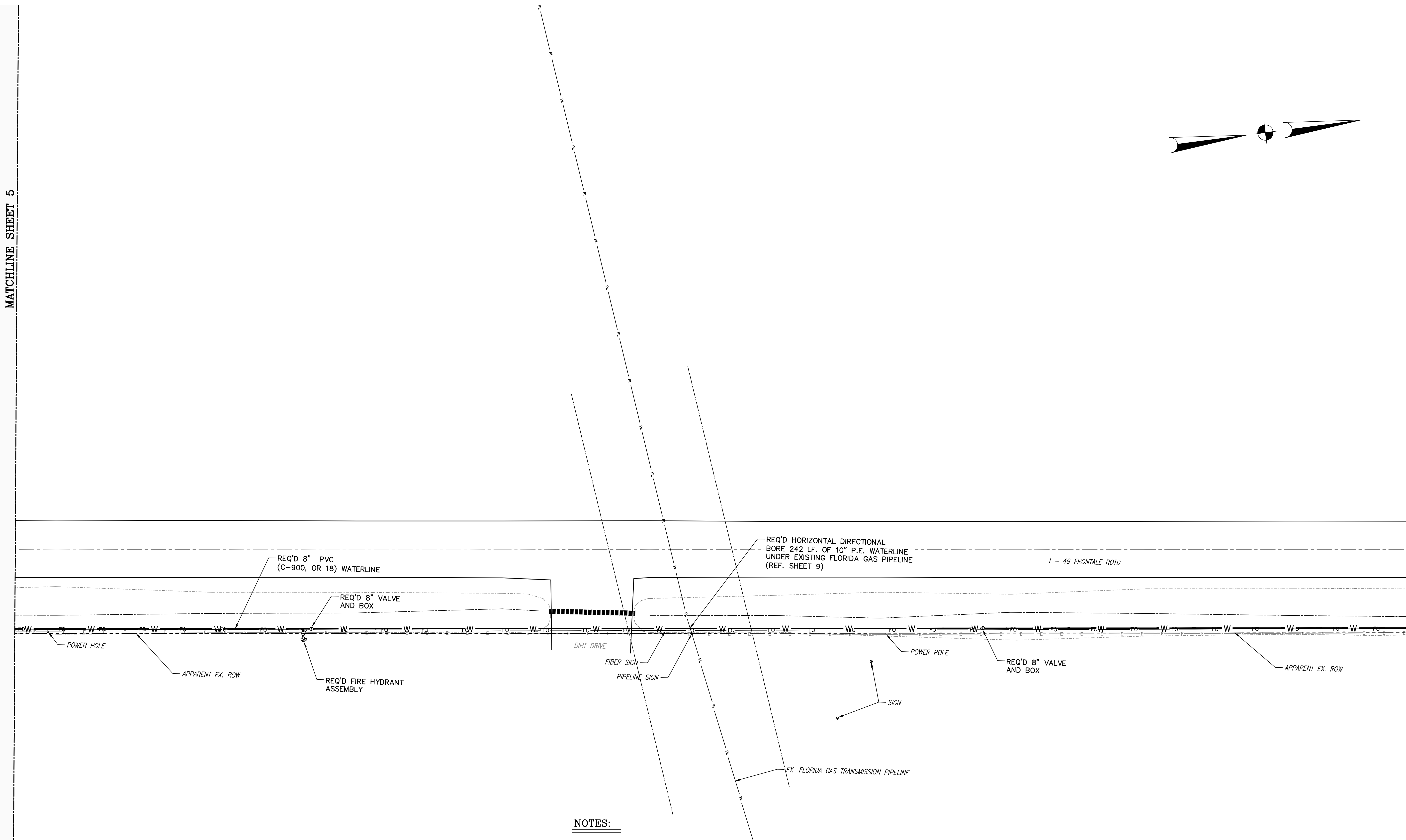
NOTES:

- ALL EXISTING UTILITIES SHOWN ON THESE DRAWINGS ARE APPROXIMATE AND OTHER UTILITIES MAY EXIST. CONTRACTOR MUST HAVE EXISTING UTILITIES LOCATED BY UNDERGROUND LINE LOCATORS AS WELL AS FIELD VERIFIED BY ONSITE PERSONNEL PRIOR TO ORDERING MATERIALS OR BEGINNING CONSTRUCTION.
- NO DIRECT PAY FOR EXTRA BURY OF WATERLINES, VALVES AND HYDRANTS, WHERE REQUIRED. THE STANDARD BURY OF HYDRANTS TO BE 3'-6".
- THE FINAL LOCATION OF THE PROPOSED WATERLINES AND APPURTENANCES TO BE DETERMINED IN THE FIELD.
- THE CONTRACTOR SHALL ESTABLISH A SEQUENCE OF CONSTRUCTION FOR THE PROJECT AND SUBMIT TO THE ENGINEER PRIOR TO BEGINNING CONSTRUCTION.
- UNLESS OTHERWISE APPROVED BY THE ENGINEER, ALL STATE ROUTES, CITY STREETS, DRIVEWAYS AND OTHER MAJOR OBSTACLES SHALL BE JACKED OR BORED.
- NO DIRECT PAY FOR REMOVAL AND REPLACEMENT OF SIGNS, POLES, MAILBOXES, FENCES, OR CULVERTS.
- NO DIRECT PAY FOR REMOVAL OD TREES AND SHRUBS.
- THE CITY WILL LOCATE EXISTING WATERLINES TO BE ABANDONED IN THE FIELD AND THE CONTRACTOR SHALL PERFORM THE WORK PER THE PAY ITEM.
- REFERENCE THE PROJECT MANUAL FOR LA DHH LEAD AND COPPER STANDARD.
- THE CONTRACTOR SHALL MAINTAIN A MINIMUM COVER OF TWO (2) FEET OVER WATER MAINS FOR ALL SURFACE WATER (DITCH OR DRAINAGE PIPE) CROSSINGS.



SHEET NUMBER		5	
WATERLINE PLAN		I-49 N SERVICE ROAD WATERLINE EXTENTION CITY OF OPELOUSAS ST. LANDRY PARISH, LOUISIANA	
SCALE: 1" = 20'	DATE: 09-24-2025	DESIGNED BY: KB, III	CHECKED BY: KB, III
DRAWN BY: SBM			
REVISION DESCRIPTION		BY	
NO.		DATE	
<div><div><div>STATE OF LOUISIANA</div><div>Kenneth Boagni, III</div><div>REG. No. 31312</div><div>REGISTERED PROFESSIONAL ENGINEER IN</div><div>09/24/2025</div></div><div><div>Morgan Goudreau & Associates</div><div>CIVIL ENGINEERS</div><div>LAND SURVEYORS</div><div>1703 West Landry Street, Opelousas, LA 70570</div><div>Phone: 337-948-4222 www.morgangoudreau.com</div></div></div>			
PROJECT NO. W#321			

MATCHLINE SHEET 5

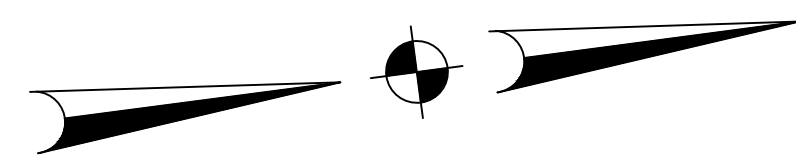


LEGEND

POWER POLE AND LINE	— E —
GUY ANCHOR	— X —
WATER LINE	— W —
WATER METER	— [M] —
GAS METER	— [G] —
TELEPHONE LINE	— T —
TELEPHONE PEDESTAL	— (P) —
FIBER OPTIC CABLE	— FO —
RIGHT OF WAY	— --- —
MAIL BOX	— [B] —
PIPELINE	— PL —
FIBER OPTIC SIGN	— [S] —
STREET SIGN	— [S] —
GAS	— GAS —
DRAIN MANHOLE	— (D) —
FIRE HYDRANT	— (H) —
WATER VALVE	— (V) —

NOTES:

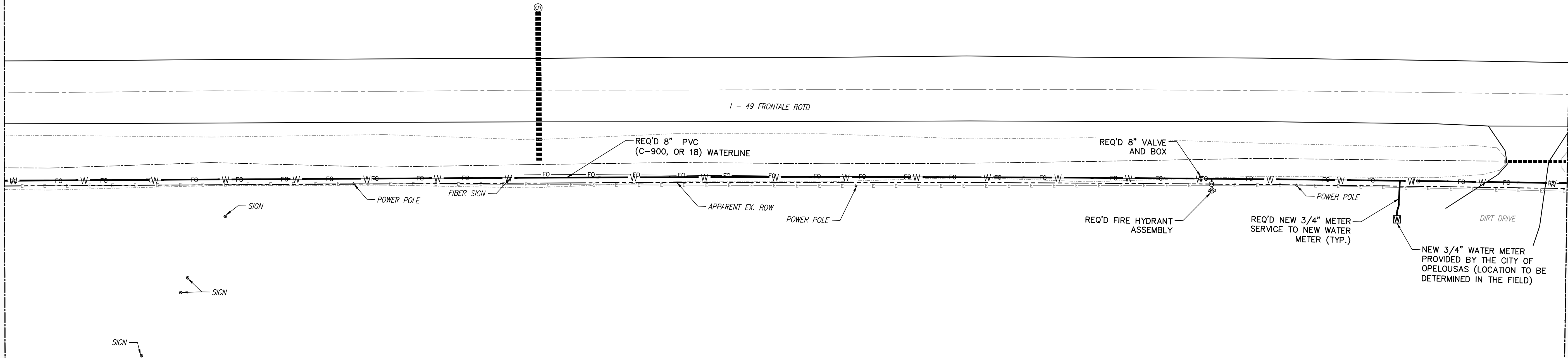
1. ALL EXISTING UTILITIES SHOWN ON THESE DRAWINGS ARE APPROXIMATE AND OTHER UTILITIES MAY EXIST. CONTRACTOR MUST HAVE EXISTING UTILITIES LOCATED BY UNDERGROUND LINE LOCATORS AS WELL AS FIELD VERIFIED BY ONSITE PERSONNEL PRIOR TO ORDERING MATERIALS OR BEGINNING CONSTRUCTION.
2. NO DIRECT PAY FOR EXTRA BURY OF WATERLINES, VALVES AND HYDRANTS, WHERE REQUIRED. THE STANDARD BURY OF HYDRANTS TO BE 3'-6".
3. THE FINAL LOCATION OF THE PROPOSED WATERLINES AND APPURTENANCES TO BE DETERMINED IN THE FIELD.
4. THE CONTRACTOR SHALL ESTABLISH A SEQUENCE OF CONSTRUCTION FOR THE PROJECT AND SUBMIT TO THE ENGINEER PRIOR TO BEGINNING CONSTRUCTION.
5. UNLESS OTHERWISE APPROVED BY THE ENGINEER, ALL STATE ROUTES, CITY STREETS, DRIVEWAYS AND OTHER MAJOR OBSTACLES SHALL BE JACKED OR BORED.
6. NO DIRECT PAY FOR REMOVAL AND REPLACEMENT OF SIGNS, POLES, MAILBOXES, FENCES, OR CULVERTS.
7. NO DIRECT PAY FOR REMOVAL OD TREES AND SHRUBS.
8. THE CITY WILL LOCATE EXISTING WATERLINES TO BE ABANDONED IN THE FIELD AND THE CONTRACTOR SHALL PERFORM THE WORK PER THE PAY ITEM.
9. REFERENCE THE PROJECT MANUAL FOR LA DHH LEAD AND COPPER STANDARD.
10. THE CONTRACTOR SHALL MAINTAIN A MINIMUM COVER OF TWO (2) FEET OVER WATER MAINS FOR ALL SURFACE WATER (DITCH OR DRAINAGE PIPE) CROSSINGS.



MATCHLINE SHEET 7

SHEET NUMBER		6	
WATERLINE PLAN			
I-49 N SERVICE ROAD WATERLINE EXTENTION CITY OF OPELOUSAS ST. LANDRY PARISH, LOUISIANA			
SCALE: 1" = 20'	DATE: 09-24-2025	DESIGNED BY: KB, III	CHECKED BY: KB, III
		DRAWN BY: SBM	
		BY	
		REVISION DESCRIPTION	
		DATE	
		NO.	
Morgan Goudreau & Associates CIVIL ENGINEERS • LAND SURVEYORS 1703 West Landry Street, Opelousas, LA 70570 Phone: 337-948-4222 www.morgangoudreau.com			
PROJECT NO. W#321			





LEGEND

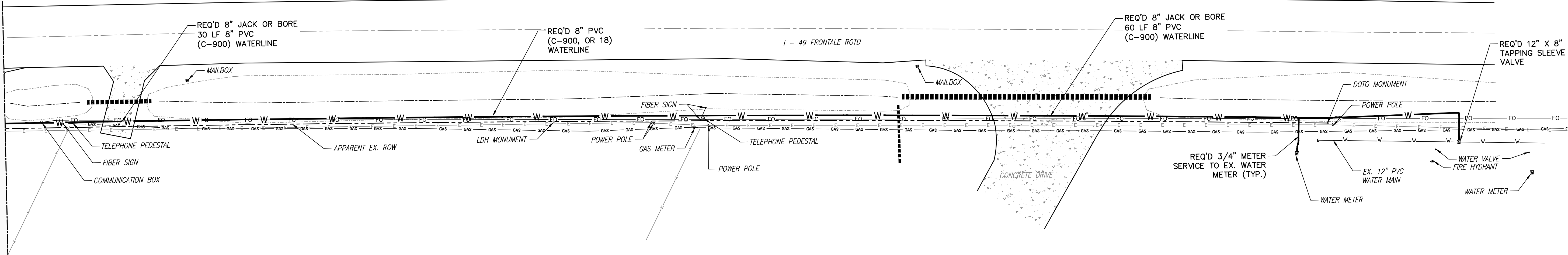
POWER POLE AND LINE	— E —
GUY ANCHOR	— W —
WATER LINE	— W —
WATER METER	— T —
GAS METER	— T —
TELEPHONE LINE	— T —
TELEPHONE PEDESTAL	— T —
FIBER OPTIC CABLE	— T —
RIGHT OF WAY	— T —
MAIL BOX	— T —
PIPELINE	— T —
FIBER OPTIC SIGN	— T —
STREET SIGN	— T —
GAS	— T —
DRAIN MANHOLE	— T —
FIRE HYDRANT	— T —
WATER VALVE	— T —

NOTES:

- ALL EXISTING UTILITIES SHOWN ON THESE DRAWINGS ARE APPROXIMATE AND OTHER UTILITIES MAY EXIST. CONTRACTOR MUST HAVE EXISTING UTILITIES LOCATED BY UNDERGROUND LINE LOCATORS AS WELL AS FIELD VERIFIED BY ONSITE PERSONNEL PRIOR TO ORDERING MATERIALS OR BEGINNING CONSTRUCTION.
- NO DIRECT PAY FOR EXTRA BURY OF WATERLINES, VALVES AND HYDRANTS, WHERE REQUIRED. THE STANDARD BURY OF HYDRANTS TO BE 3'-6".
- THE FINAL LOCATION OF THE PROPOSED WATERLINES AND APPURTENANCES TO BE DETERMINED IN THE FIELD.
- THE CONTRACTOR SHALL ESTABLISH A SEQUENCE OF CONSTRUCTION FOR THE PROJECT AND SUBMIT TO THE ENGINEER PRIOR TO BEGINNING CONSTRUCTION.
- UNLESS OTHERWISE APPROVED BY THE ENGINEER, ALL STATE ROUTES, CITY STREETS, DRIVEWAYS AND OTHER MAJOR OBSTACLES SHALL BE JACKED OR BORED.
- NO DIRECT PAY FOR REMOVAL AND REPLACEMENT OF SIGNS, POLES, MAILBOXES, FENCES, OR CULVERTS.
- NO DIRECT PAY FOR REMOVAL OD TREES AND SHRUBS.
- THE CITY WILL LOCATE EXISTING WATERLINES TO BE ABANDONED IN THE FIELD AND THE CONTRACTOR SHALL PERFORM THE WORK PER THE PAY ITEM.
- REFERENCE THE PROJECT MANUAL FOR LA DHH LEAD AND COPPER STANDARD.
- THE CONTRACTOR SHALL MAINTAIN A MINIMUM COVER OF TWO (2) FEET OVER WATER MAINS FOR ALL SURFACE WATER (DITCH OR DRAINAGE PIPE) CROSSINGS.



SHEET NUMBER		7	
WATERLINE PLAN			
I-49 N SERVICE ROAD WATERLINE EXTENTION CITY OF OPELOUSAS ST. LANDRY PARISH, LOUISIANA			
SCALE: 1" = 20'	DATE: 09-24-2025	DESIGNED BY: KB, III	CHECKED BY: KB, III
DRAWN BY: SBM			
BY		REVISION DESCRIPTION	
NO.		DATE	
09/24/2025			
Morgan Goudreau & Associates CIVIL ENGINEERS • LAND SURVEYORS 1703 West Landry Street, Opelousas, LA 70570 Phone: 337-948-4222 www.morgangoudreau.com			
PROJECT NO. W#321			



LEGEND

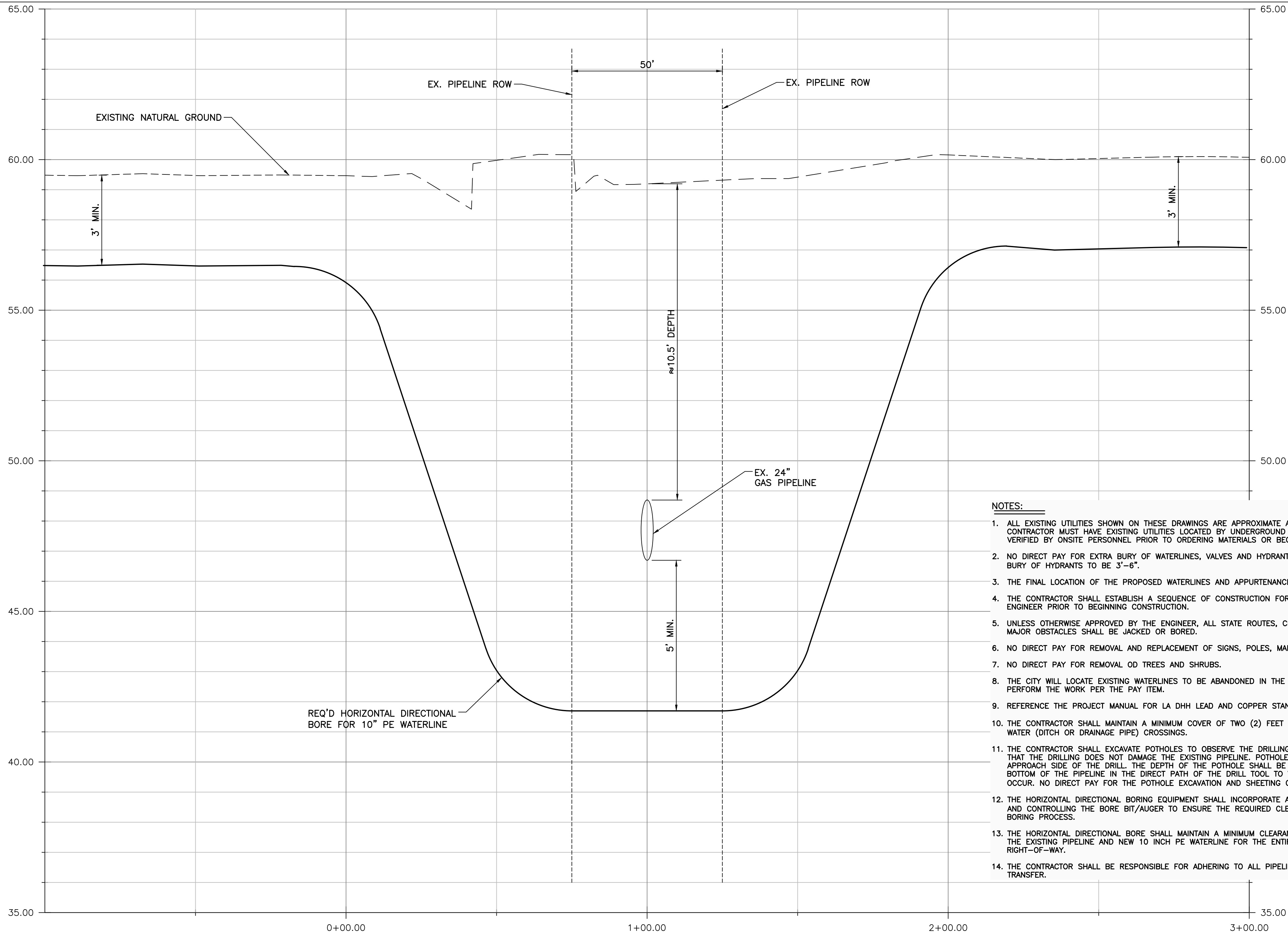
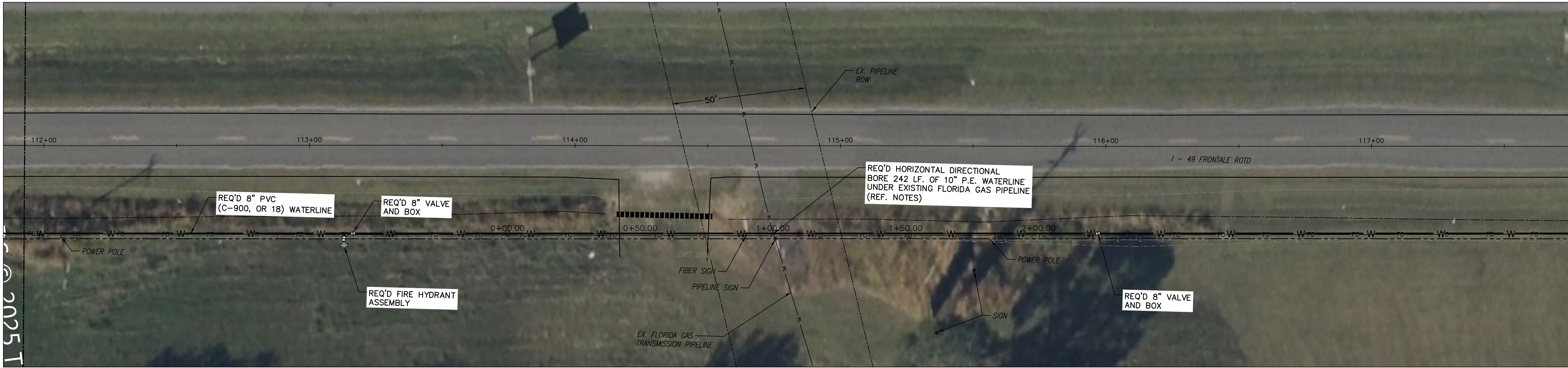
POWER POLE AND LINE	
GUY ANCHOR	
WATER LINE	
WATER METER	
GAS METER	
TELEPHONE LINE	
TELEPHONE PEDESTAL	
FIBER OPTIC CABLE	
RIGHT OF WAY	
MAIL BOX	
PIPELINE	
FIBER OPTIC SIGN	
STREET SIGN	
GAS	
DRAIN MANHOLE	
FIRE HYDRANT	
WATER VALVE	

NOTES:

- ALL EXISTING UTILITIES SHOWN ON THESE DRAWINGS ARE APPROXIMATE AND OTHER UTILITIES MAY EXIST. CONTRACTOR MUST HAVE EXISTING UTILITIES LOCATED BY UNDERGROUND LINE LOCATORS AS WELL AS FIELD VERIFIED BY ONSITE PERSONNEL PRIOR TO ORDERING MATERIALS OR BEGINNING CONSTRUCTION.
- NO DIRECT PAY FOR EXTRA BURY OF WATERLINES, VALVES AND HYDRANTS, WHERE REQUIRED. THE STANDARD BURY OF HYDRANTS TO BE 3'-6".
- THE FINAL LOCATION OF THE PROPOSED WATERLINES AND APPURTENANCES TO BE DETERMINED IN THE FIELD.
- THE CONTRACTOR SHALL ESTABLISH A SEQUENCE OF CONSTRUCTION FOR THE PROJECT AND SUBMIT TO THE ENGINEER PRIOR TO BEGINNING CONSTRUCTION.
- UNLESS OTHERWISE APPROVED BY THE ENGINEER, ALL STATE ROUTES, CITY STREETS, DRIVEWAYS AND OTHER MAJOR OBSTACLES SHALL BE JACKED OR BORED.
- NO DIRECT PAY FOR REMOVAL AND REPLACEMENT OF SIGNS, POLES, MAILBOXES, FENCES, OR CULVERTS.
- NO DIRECT PAY FOR REMOVAL OD TREES AND SHRUBS.
- THE CITY WILL LOCATE EXISTING WATERLINES TO BE ABANDONED IN THE FIELD AND THE CONTRACTOR SHALL PERFORM THE WORK PER THE PAY ITEM.
- REFERENCE THE PROJECT MANUAL FOR LA DHH LEAD AND COPPER STANDARD.
- THE CONTRACTOR SHALL MAINTAIN A MINIMUM COVER OF TWO (2) FEET OVER WATER MAINS FOR ALL SURFACE WATER (DITCH OR DRAINAGE PIPE) CROSSINGS.



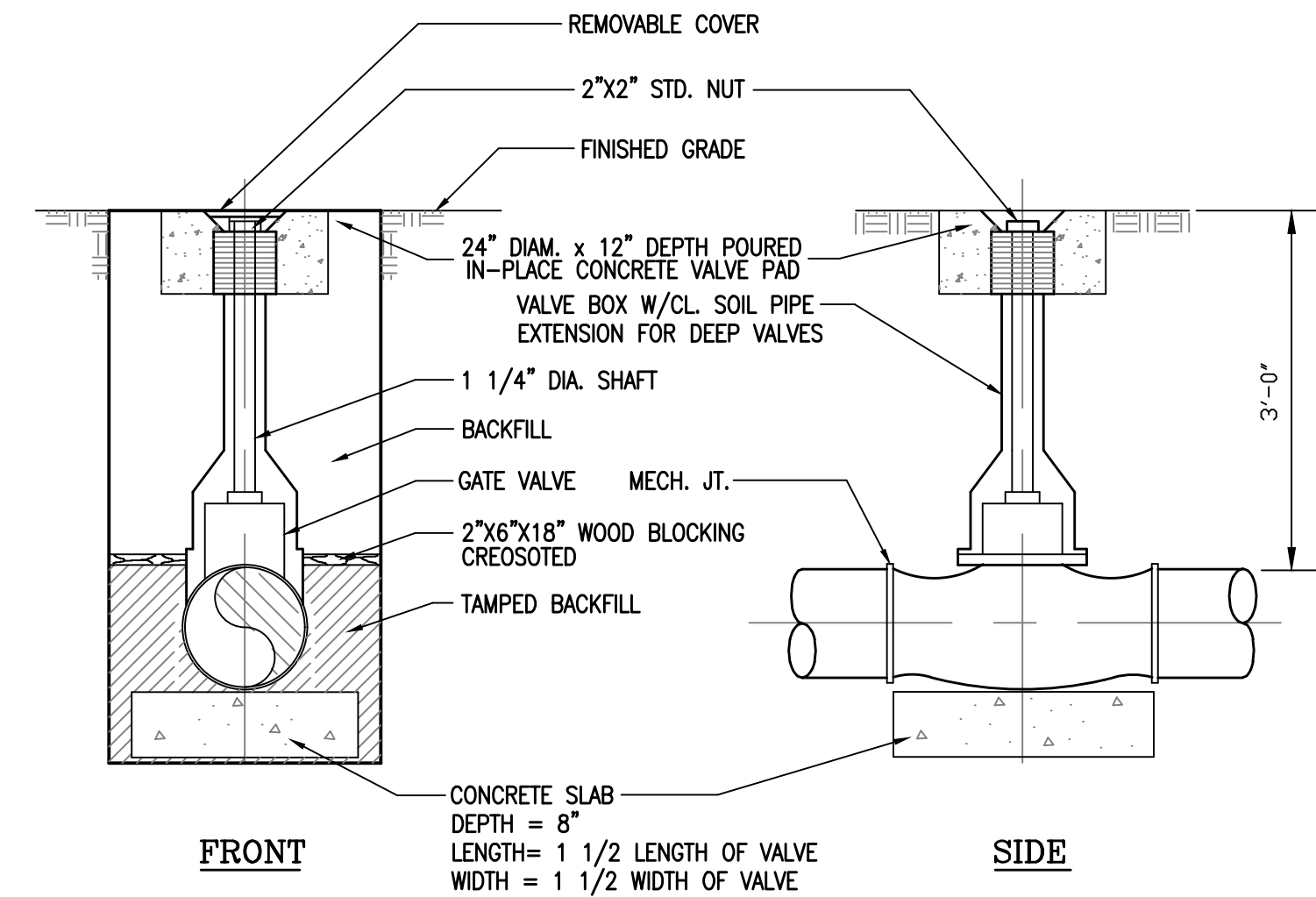
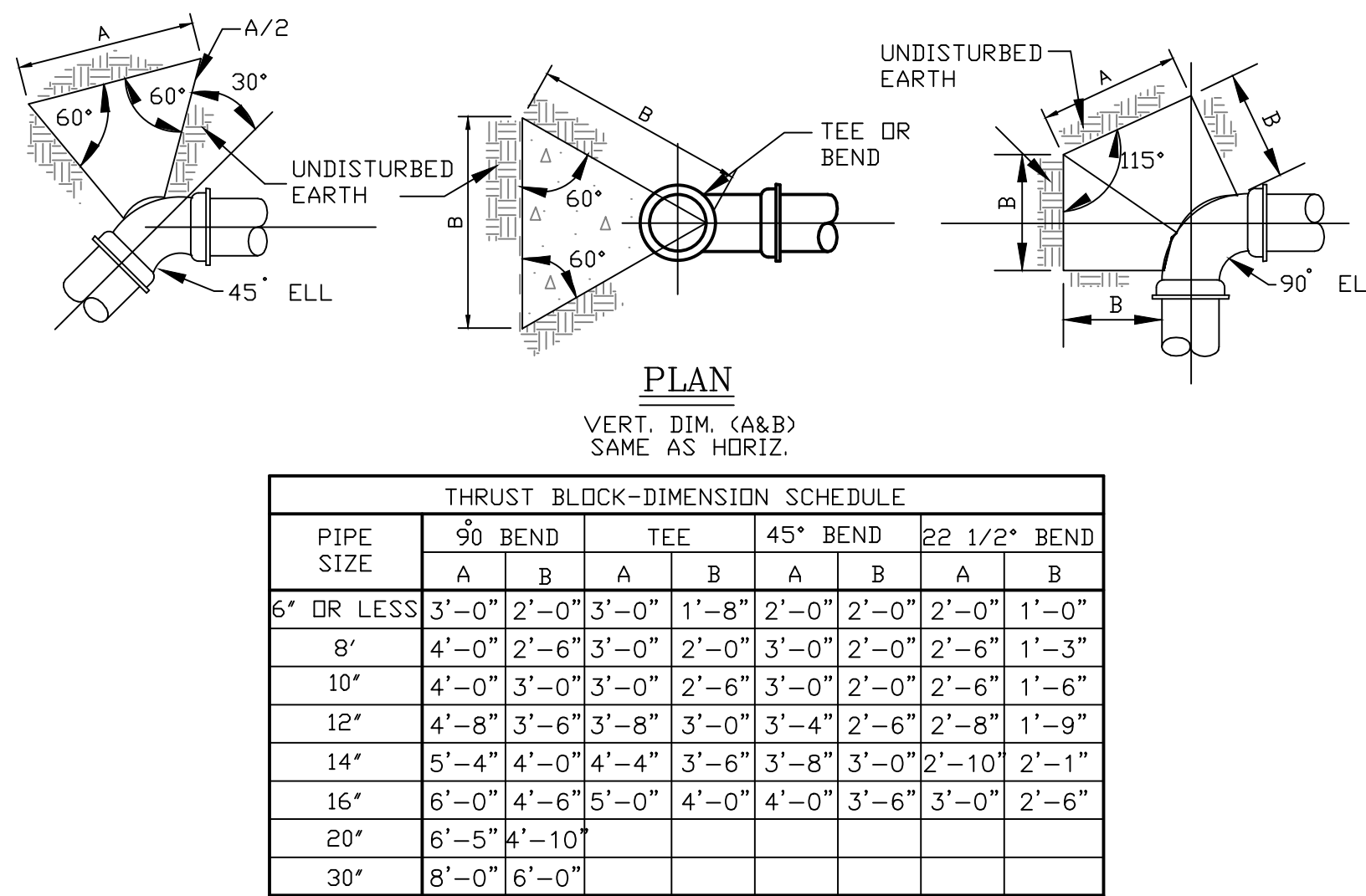
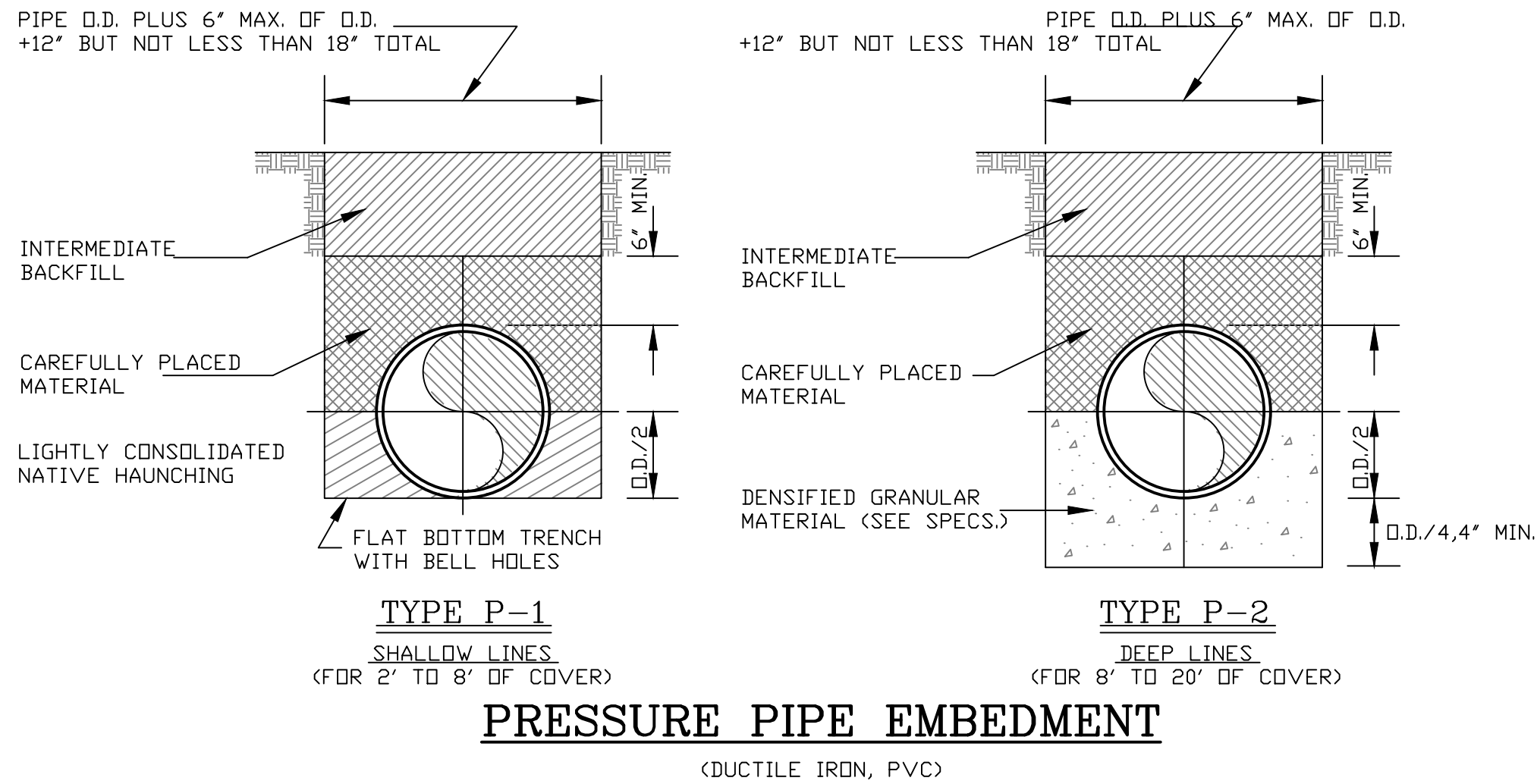
SHEET NUMBER		8	
WATERLINE PLAN		I-49 N SERVICE ROAD WATERLINE EXTENTION CITY OF OPELOUSAS ST. LANDRY PARISH, LOUISIANA	
SCALE: 1" = 20'	DATE: 09-24-2025	DESIGNED BY: KB, III	CHECKED BY: KB, III
		DRAWN BY: SBM	
		BY	
		REVISION DESCRIPTION	
		DATE	
		NO.	
09/24/2025			
Morgan Goudreau & Associates CIVIL ENGINEERS • LAND SURVEYORS 1703 West Landry Street, Opelousas, LA 70570 Phone: 337-948-4222 www.morgangoudreau.com			
PROJECT NO. W#321			



- NOTES:**
1. ALL EXISTING UTILITIES SHOWN ON THESE DRAWINGS ARE APPROXIMATE AND OTHER UTILITIES MAY EXIST. CONTRACTOR MUST HAVE EXISTING UTILITIES LOCATED BY UNDERGROUND LINE LOCATORS AS WELL AS FIELD VERIFIED BY ONSITE PERSONNEL PRIOR TO ORDERING MATERIALS OR BEGINNING CONSTRUCTION.
 2. NO DIRECT PAY FOR EXTRA BURY OF WATERLINES, VALVES AND HYDRANTS, WHERE REQUIRED. THE STANDARD BURY OF HYDRANTS TO BE 3'-6".
 3. THE FINAL LOCATION OF THE PROPOSED WATERLINES AND APPURTENANCES TO BE DETERMINED IN THE FIELD.
 4. THE CONTRACTOR SHALL ESTABLISH A SEQUENCE OF CONSTRUCTION FOR THE PROJECT AND SUBMIT TO THE ENGINEER PRIOR TO BEGINNING CONSTRUCTION.
 5. UNLESS OTHERWISE APPROVED BY THE ENGINEER, ALL STATE ROUTES, CITY STREETS, DRIVEWAYS AND OTHER MAJOR OBSTACLES SHALL BE JACKED OR BORED.
 6. NO DIRECT PAY FOR REMOVAL AND REPLACEMENT OF SIGNS, POLES, MAILBOXES, FENCES, OR CULVERTS.
 7. NO DIRECT PAY FOR REMOVAL OF TREES AND SHRUBS.
 8. THE CITY WILL LOCATE EXISTING WATERLINES TO BE ABANDONED IN THE FIELD AND THE CONTRACTOR SHALL PERFORM THE WORK PER THE PAY ITEM.
 9. REFERENCE THE PROJECT MANUAL FOR LA DHH LEAD AND COPPER STANDARD.
 10. THE CONTRACTOR SHALL MAINTAIN A MINIMUM COVER OF TWO (2) FEET OVER WATER MAINS FOR ALL SURFACE WATER (DITCH OR DRAINAGE PIPE) CROSSINGS.
 11. THE CONTRACTOR SHALL EXCAVATE POTHOLES TO OBSERVE THE DRILLING AND PULLING PROCESS TO ENSURE THAT THE DRILLING DOES NOT DAMAGE THE EXISTING PIPELINE. POTHOLES SHALL BE EXCAVATED ON THE APPROACH SIDE OF THE DRILL. THE DEPTH OF THE POTHOLE SHALL BE A MINIMUM 24 INCHES BELOW THE BOTTOM OF THE PIPELINE IN THE DIRECT PATH OF THE DRILL TOOL TO VISUALLY CONFIRM THAT NO IMPACT WILL OCCUR. NO DIRECT PAY FOR THE POTHOLE EXCAVATION AND SHEETING OR SHORING OF THE POTHOLE(S).
 12. THE HORIZONTAL DIRECTIONAL BORING EQUIPMENT SHALL INCORPORATE A MECHANISM FOR REAL TIME POSITIONING AND CONTROLLING THE BORE BIT/AUGER TO ENSURE THE REQUIRED CLEARANCE IS MAINTAINED THROUGHOUT THE BORING PROCESS.
 13. THE HORIZONTAL DIRECTIONAL BORE SHALL MAINTAIN A MINIMUM CLEARANCE OF 5 FEET BETWEEN THE BOTTOM OF THE EXISTING PIPELINE AND NEW 10 INCH PE WATERLINE FOR THE ENTIRE WIDTH OF THE PIPELINE RIGHT-OF-WAY.
 14. THE CONTRACTOR SHALL BE RESPONSIBLE FOR ADHERING TO ALL PIPELINE CROSSING REQUIREMENTS BY ENERGY TRANSFER.



SHEET NUMBER		9	
PIPELINE CROSSING PLAN-PROFILE			
I-49 N SERVICE ROAD WATERLINE EXTENTION CITY OF OPELOUSAS ST. LANDRY PARISH, LOUISIANA			
SCALE: AS SHOWN	DATE: 09-24-2025	DESIGNED BY: KB, III	CHECKED BY: KB, III
DRAWN BY: SBM		BY	
NO.		DATE	
REVISION DESCRIPTION			
<div><div></div><div><p><i>Morgan Goudreau & Associates</i></p><p>CIVIL ENGINEERS • LAND SURVEYORS</p><p>1703 West Landry Street, Opelousas, LA 70570 Phone: 337-948-4222 www.morgangoudreau.com</p><p>MGA</p><p>PROJECT NO. W#321</p></div></div>			

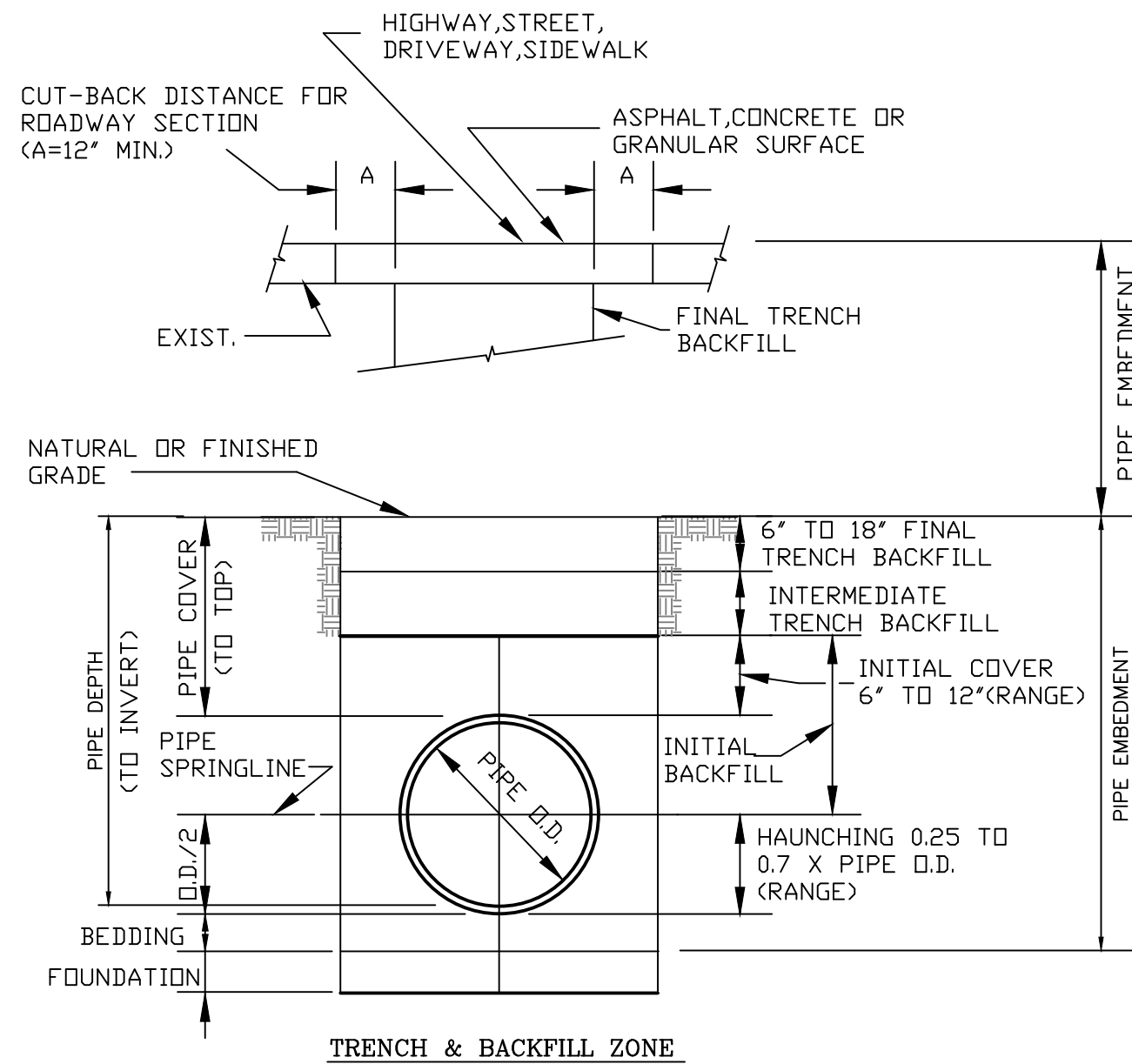


VALVE ASSEMBLY DETAIL

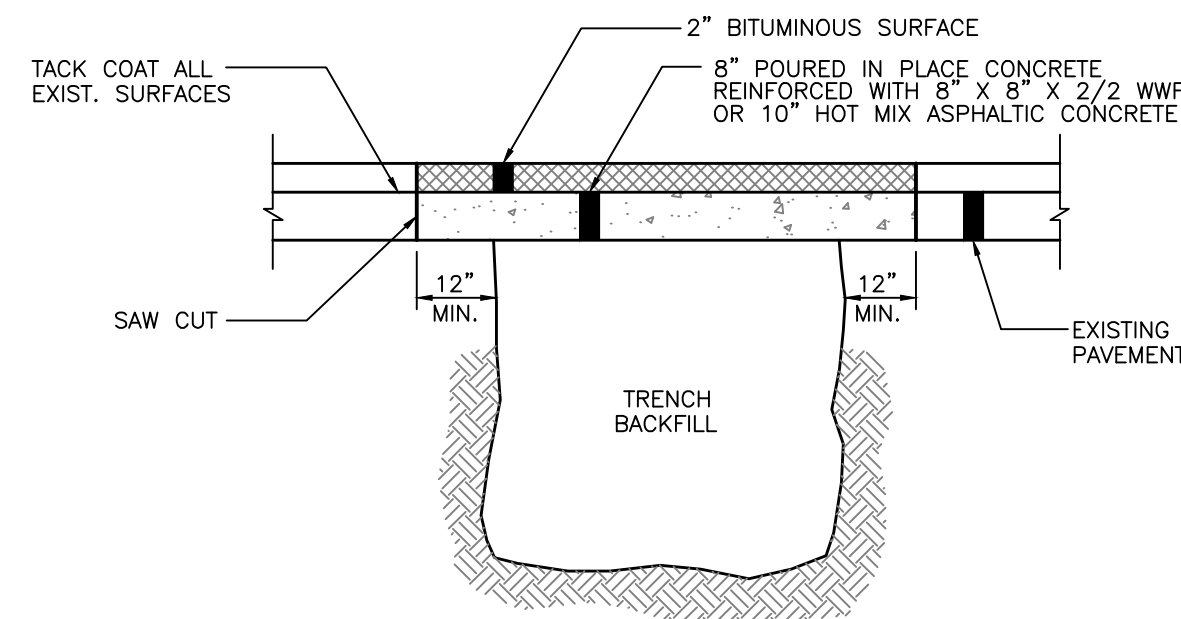
- NOTES: 1. FOR VALVES LOCATED GREATER THAN FOUR(4) FEET BELOW GRADE AN EXTENSION STEM TO WITHIN TWO(2) FEET OF GRADE SHALL BE FURNISHED.
2. CONTRACTOR SHALL FURNISH TWO(2) VALVE OPERATORS PER PROJECT.
3. CONTRACTOR SHALL FURNISH & INSTALL A VALVE IDENTIFICATION MARKER WITH EACH VALVE INSTALLED. MARKER TO BE CARSONITE FLAT TOP LINEMARKER OR EQUAL.

PRESSURE PIPE THRUST BLOCK DETAILS

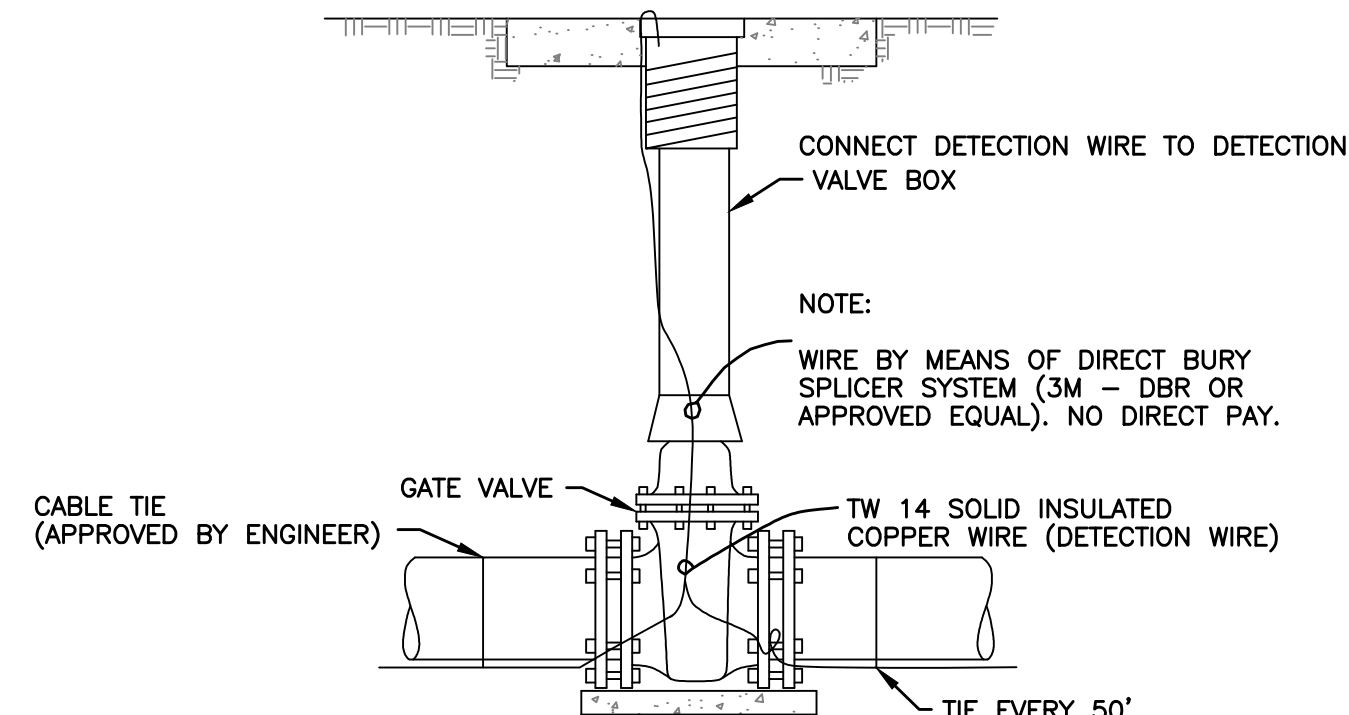
- NOTES: 1. JOINTS NOT TO BE ENCASED IN CONCRETE.
2. ALL THRUST BLOCKS TO BE CONSTRUCTED AGAINST UNDISTURBED EARTH. WHERE EXISTING EARTH HAS AN ALLOWABLE LATERAL BEARING PRESSURE AT LESS THAN 500 POUNDS PER SQUARE FOOT OR A STANDARD PENETRATION RESISTANCE (A.S.T.M. D-1586) OF LESS THAN 2, CONTRACTOR SHALL PROVIDE AN ALTERNATE THRUST BLOCK DESIGN AND SUBMIT IT TO THE ENGINEER FOR APPROVAL. FOR PRESSURE IN EXCESS OF 100 PSI BLOCKING SHALL BE INCREASED PROPORTIONALLY.



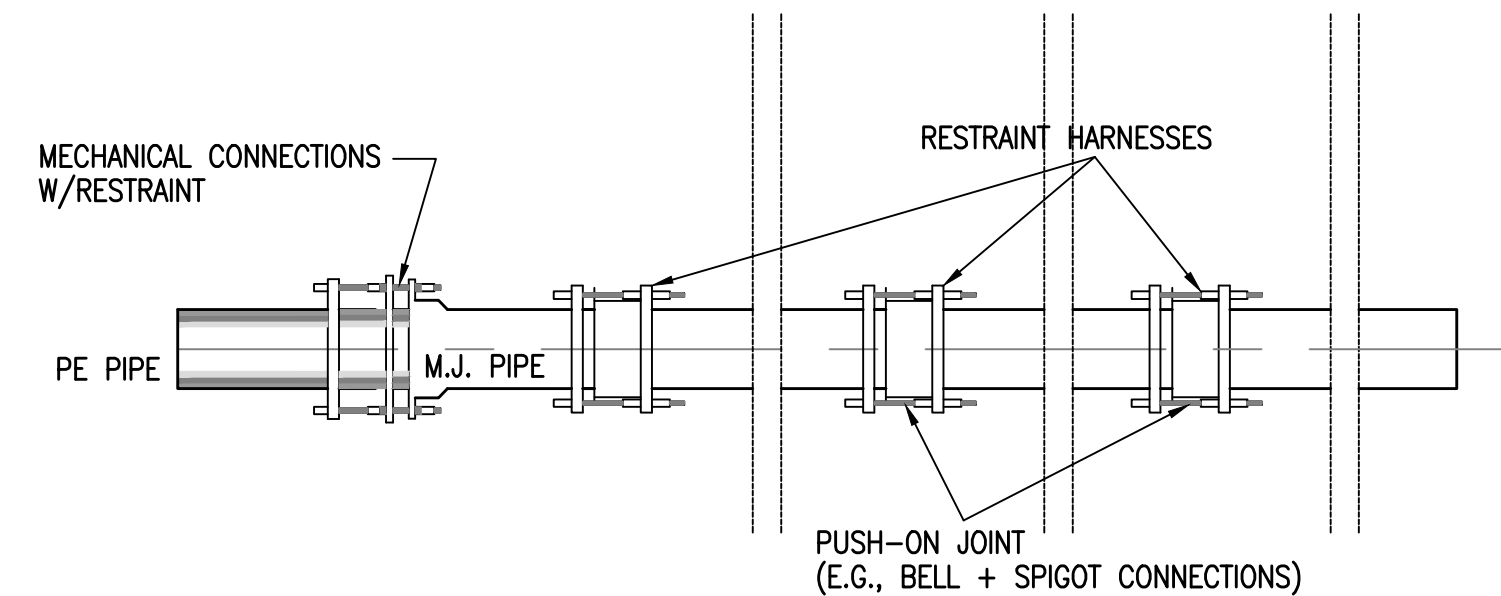
STANDARD TERMINOLOGY



TYPICAL ROADWAY RESTORATION

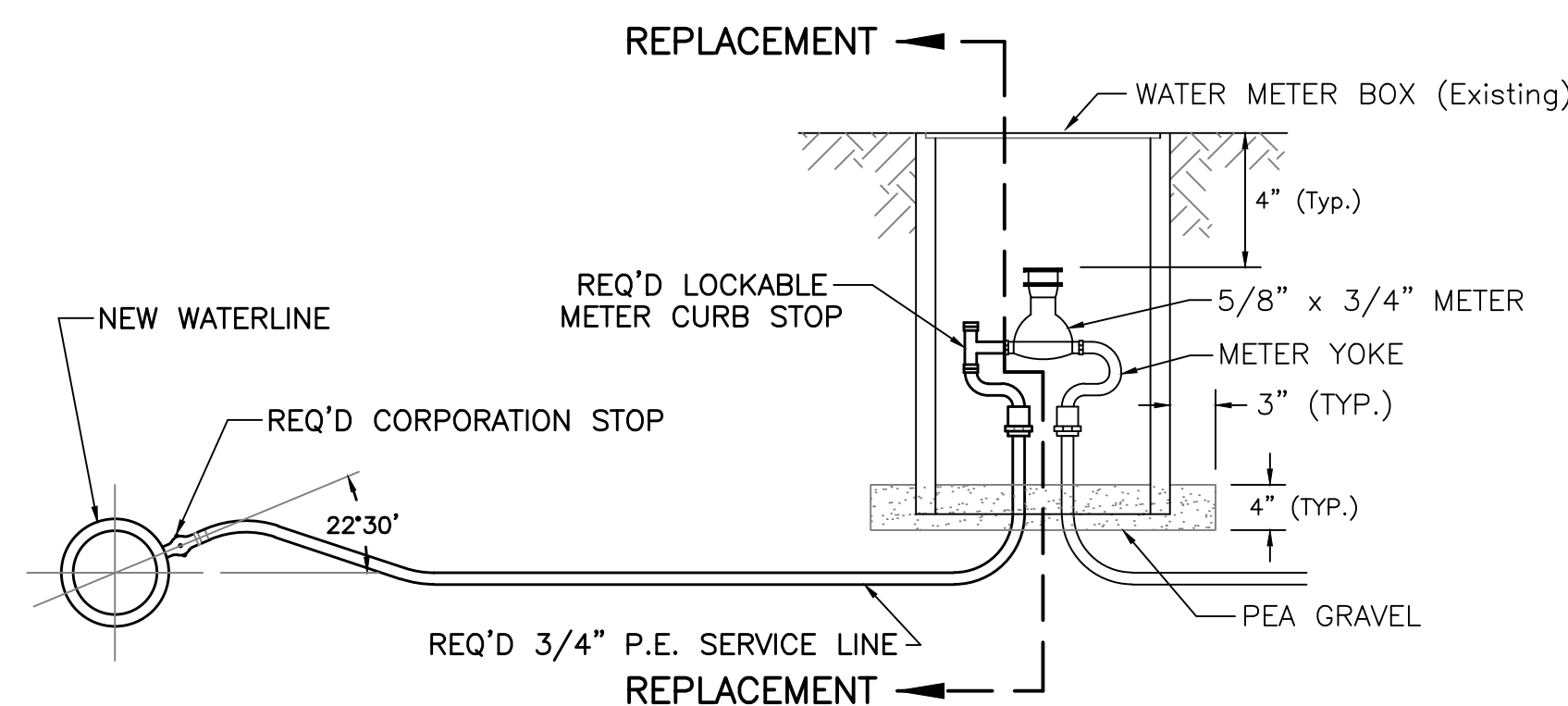


TYPICAL TRACER WIRE INSTALLATION



RESTRAINT HARNESS DETAIL FOR PE TO PVC PIPE CONNECTION

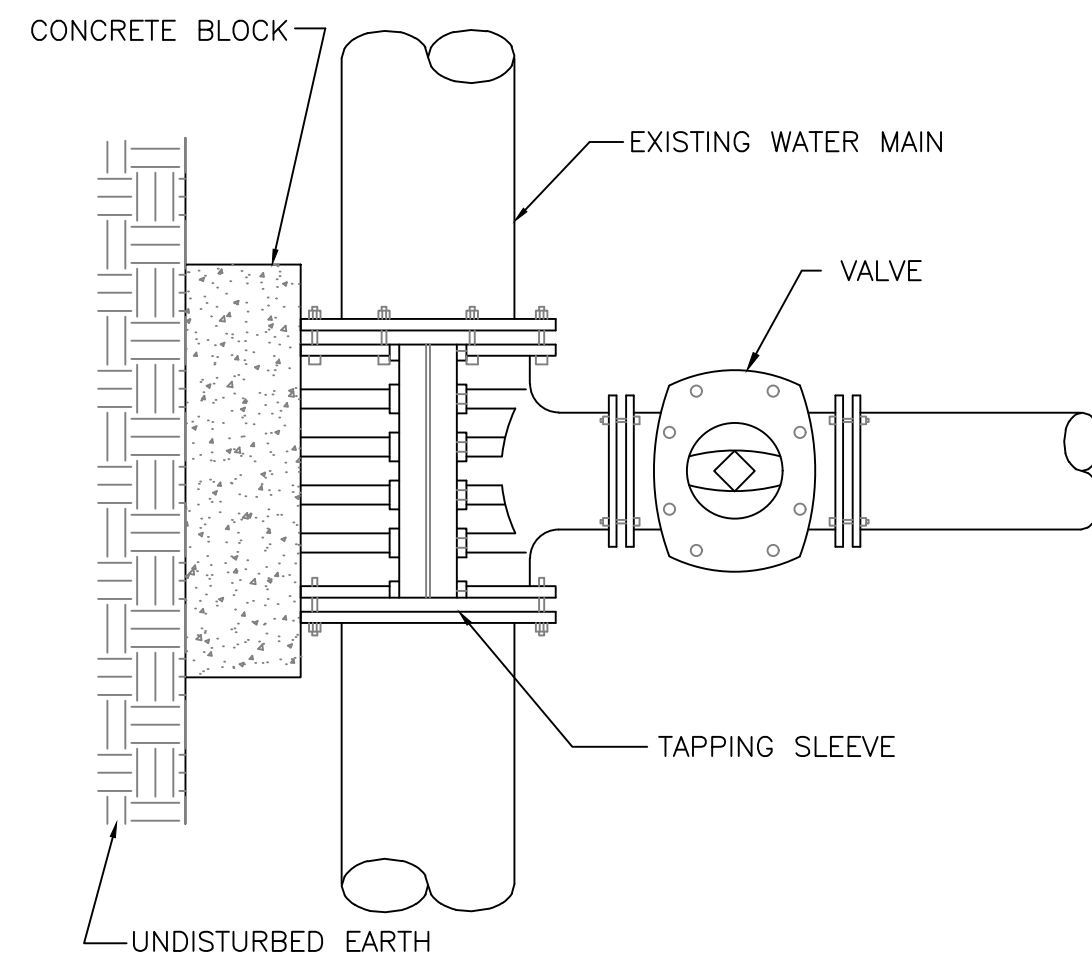
N.T.S.



- NOTES: 1. MAJORITY OF EXISTING METERS DO NOT HAVE CURB STOPS.
2. CONTRACTOR TO INSTALL NEW P.E. SERVICE LINES FROM WATER MAIN TO EXISTING METER BOX, AND INSTALL LOCKABLE CURB STOPS AT EACH METER. EXISTING METERS AND METER BOXES TO REMAIN.

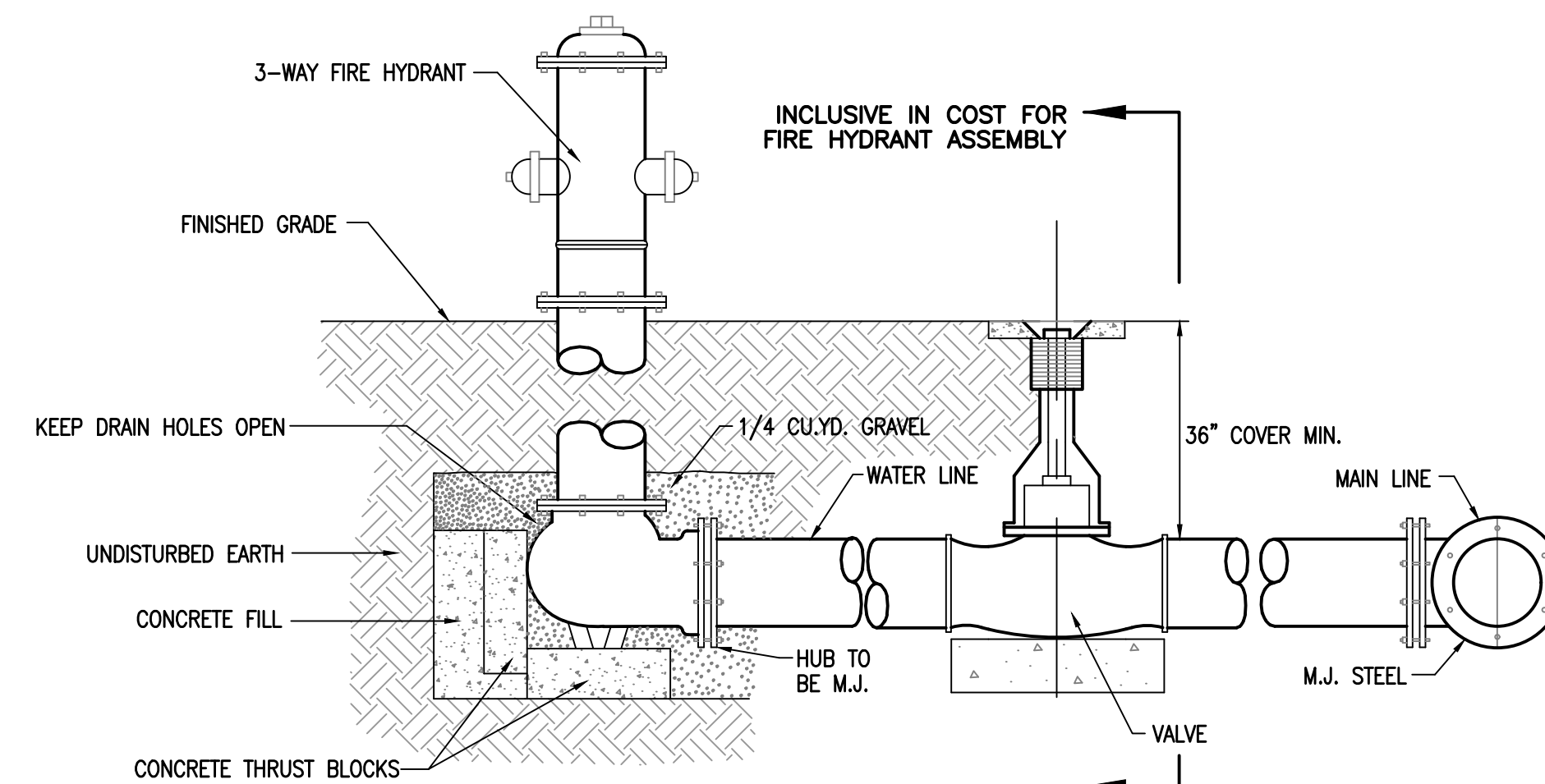
TYPICAL RESIDENTIAL METER DETAIL

NOT TO SCALE



TYPICAL TAPPING SLEEVE & VALVE

not to scale



TYPICAL FIRE HYDRANT ASSEMBLY

NOT TO SCALE

TYPICAL DETAILS

I-49 N SERVICE ROAD WATERLINE EXTENSION

CITY OF OPELOUSAS

ST. LANDRY PARISH, LOUISIANA

SCALE: AS SHOWN

DATE: 09-24-2025

DESIGNED BY: KB, III

CHECKED BY: KB, III

DRAWN BY: SBM

BY

REVISION DESCRIPTION

DATE

NO.



09/24/2025

Morgan Goudreau & Associates
CIVIL ENGINEERS • LAND SURVEYORS
1703 West Landry Street, Opelousas, LA 70570
Phone: 337-948-4222 www.morgangoudreau.com



PROJECT NO.
W#321